

# NODOSA WAY HOUSE & LAND



**\$351 per week\***

Land size 209m<sup>2</sup>

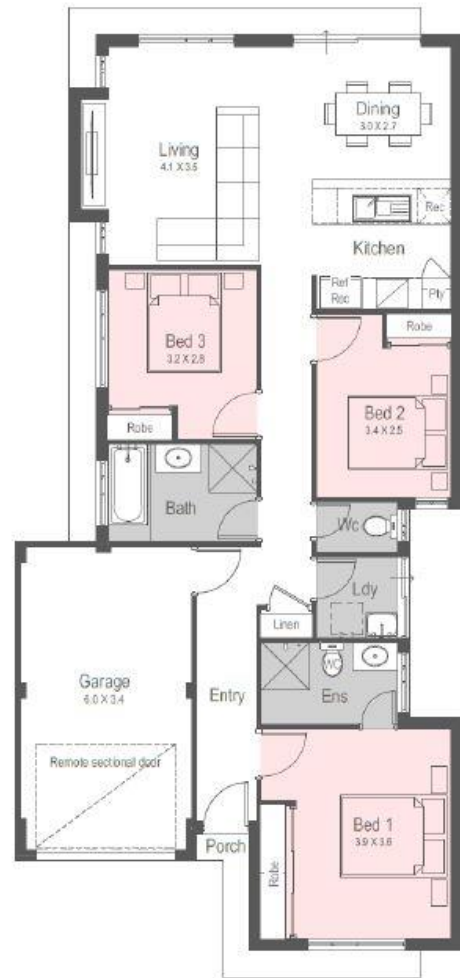
Frontage 8.8m

**Unit 2, 14 Incana Way, Beeliar**



**For more information  
please contact:**  
Thanh 0414 288 165

**FLEUR**



## Special Features

- Fully ducted reverse cycle air conditioning
- 900mm Stainless steel appliances and 20mm Caesarstone benchtops
- LED downlights throughout
- Mirrored sliding doors to robes & glass pivot screen doors to showers
- Quality floor coverings and blinds
- Jason Windows sliding doors & windows
- 25 year structural guarantee and fixed site costs

Image for illustrative purposes only. \*T&C's apply. See website