

LAND USE / STATISTICS			
STAGE 6			
WAPC Ref:- NOT ISSUED			
PARCEL TYPE	MAP SYMBOL	NUMBER OF PARCELS	AREA (ha)
Traditional Lots		31	1.7144
Duplex Lots	Dx	2	0.2320
Public Open Space	P.O.S.	0	0
Roads (inc. truncations)			0.6155
<b>STAGE TOTAL</b>		<b>33</b>	<b>2.5620</b>

Ver.	Description	Drawn	Date	Checked
A	Initial Issue	GPM	24/02/2016	SDW

FILES  
mapCOGO - Plan096a  
Control Register: 95492  
File Name: 95492an-096a.dgn

PRECAL LEGEND  
See below Lot Stats table for further information  
- - - Stage Boundary  
..... Vehicle Access Restriction



EQUIS LAKES  
STAGE 6 - ANGLES PLAN  
The Vines

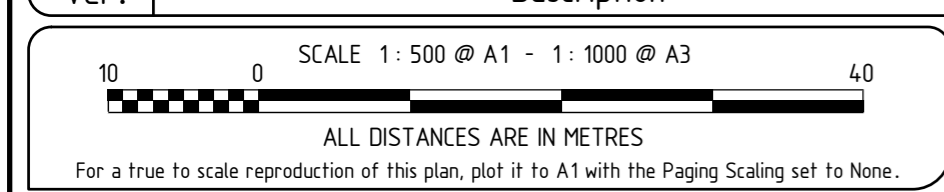
CLIENT: **LWP**  
bringing communities to life

MC MULLEN NOLAN GROUP  
Level 1, 2 Sabra Crescent  
Jandakot, W.A. 6164  
PO Box 3535, Success  
W.A. 6964, Australia  
ABN 90 009 363 311  
Offices in: Broome, Bunbury, Kununurra, Newman, Onslow, Port Hedland

Tel: (08) 6436 1599  
Fax: (08) 6436 1500  
info@mngsurvey.com.au  
www.mngsurvey.com.au

The contents of this plan are current and correct as of the date stated within the revision panel. All consultants and persons wishing to utilise this data should satisfy themselves of this plan currency by contacting the Mullen Nolan Group.

Project Mngr:	Trevor Veen	Datum:	PCG94
<b>95492 - 096 - A</b>			
Job Number	Plan Number	Version	



PLANNER'S DESIGN SOURCE for Rev  
Planner :-  
Received date:-  
File name:-

ENGINEER'S DESIGN SOURCE for Rev  
Engineer :-  
Received date:-  
Data purpose:-

All areas and dimensions depicted on this plan are subject to survey and Landgate registration. All cadastral information external to the stage/s which form the subject of this plan are not guaranteed and are supplied as a guide only.



MC MULLEN NOLAN GROUP  
Level 1, 2 Sabra Crescent  
Jandakot, W.A. 6164  
PO Box 3535, Success  
W.A. 6964, Australia  
ABN 90 009 363 311  
Offices in: Broome, Bunbury, Kununurra, Newman, Onslow, Port Hedland

Tel: (08) 6436 1599  
Fax: (08) 6436 1500  
info@mngsurvey.com.au  
www.mngsurvey.com.au

Project Mngr:	Trevor Veen	Datum:	PCG94
<b>95492 - 096 - A</b>			
Job Number	Plan Number	Version	